



# OUR ACADEMY IMPROVEMENT PLAN

## OUR TEACHING

- Ensure teaching and learning is at a high standard.
- Maintain a clear triangulation from EHCP targets through to MTP and ILPs.
- Further develop assessment tools to allow progress to be accurately measured and moderated.



## OUR CURRICULUM



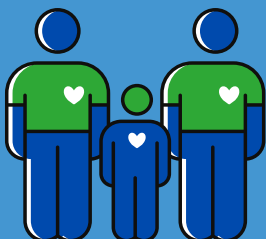
- Review our curriculum to ensure it continues to meet the needs of all pupils.
- Develop an appropriate programme of study to meet the social, emotional and mental health needs of our pupils in post-COVID19 times.

## OUR PARTNERSHIPS

- Continue to foster strategic and operational partnership working within the Trust.
- Guarantee high quality inclusive provision and a shared understanding of our rationale with our partner schools.
- Review and enhance our Post-16 provision



## OUR COMMUNITY



- Embed safeguarding themes within the curriculum to enable pupils to learn to keep themselves safe.
- Review our Behaviour Policy to reflect the evolving need of our school.
- Focus on restorative practice and relational approaches to supporting pupils.
- Further improved whole-school attendance (>90%) to be sustained and persistent absence reduced (<30%).