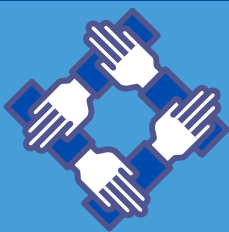
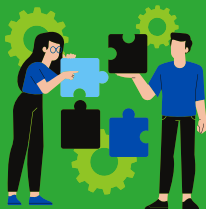




GREEN MEADOWS ACADEMY VISION 2025

PEOPLE

- Expectation of excellence
- Programme of regular, high quality CPD
- Clear pathways of career development
- Staff wellbeing at the heart of our academy
- Build on our strong parent/carer relationships post-COVID19



DOING

- Continued and sustained investment in the GMA infrastructure and learning environment
- Further development of the GMA estate, to make best use of the outside space
- Review and further develop our curriculum to ensure it continues to meet the needs of all pupils

INNOVATING

- Contribute and take a leading role in Trust-wide strategy groups, Josie TV, and knowledge exchange events
- Become specialist special school practitioners



ASSURING

- Maintain the clear triangulation from EHCP targets through to MTP and ILPs
- Review and refine assessment tools
- Work collaboratively and collegially with Leeds / N Yorks academies to moderate our work
- Welcome, and relish challenge and support from our critical friends across the Trust



GREEN MEADOWS ACADEMY VISION 2025

SUSTAINING

- Being ever mindful of the environmental impact of our work
- Develop the use of the woodland area of the GMA estate as an eco-friendly learning environment
- Promote the use of electric vehicles with the introduction of EV charge points



Inclusive Outward-facing Open
Progressive **Ethical**
Transparent Caring
 Plural
Courageous **Generous**
 Confident Collaborative
Respectful Supportive
 Collegial Curious